

New evidence on income distribution and economic growth in Japan

Masako Oyama*
Ryukoku University

Abstract

There have been many theoretical and empirical researches on the effects of income distribution on economic growth. This paper uses Japanese prefectural panel data to empirically analyze how income distribution affects economic growth.

Four measures of the income distribution are used in the system GMM estimations. The Gini indices, income share of the third quintile and the ratio of the income share of the top decile and the 5th decile show that income equality has positive effects on growth. The ratio of the income share of the bottom decile and the 5th decile does not have statistically significant effects. Therefore, the estimation results show that the decreased income equality in recent Japan inhibited the economic growth.

JEL Classification Codes: O40, C33, J01

* 67 Tsukamoto-cho, Fukakusa, Fushimi-ku, Kyoto 612-8577,
Email: m-oyama@econ.ryukoku.ac.jp

I am very grateful to Fumio Ohtake, Kazuo Ogawa, Toshiaki Tachibanaki, Hideo Akabayashi, Takashi Kurosaki, Daiji Kawaguchi, Emiko Usui, Taizo Motonishi and the participants at the Japanese Economic Association 2014 Spring Meeting, the Kansai macroeconomics workshop, the 17th Labor economics conference, the Tokyo labor economics workshop, the Japanese Economic Association 2015 Spring Meeting, Kansai University Economics Seminar for their helpful comments and suggestions. I also appreciate the support at Osaka University and the Ryukoku University.

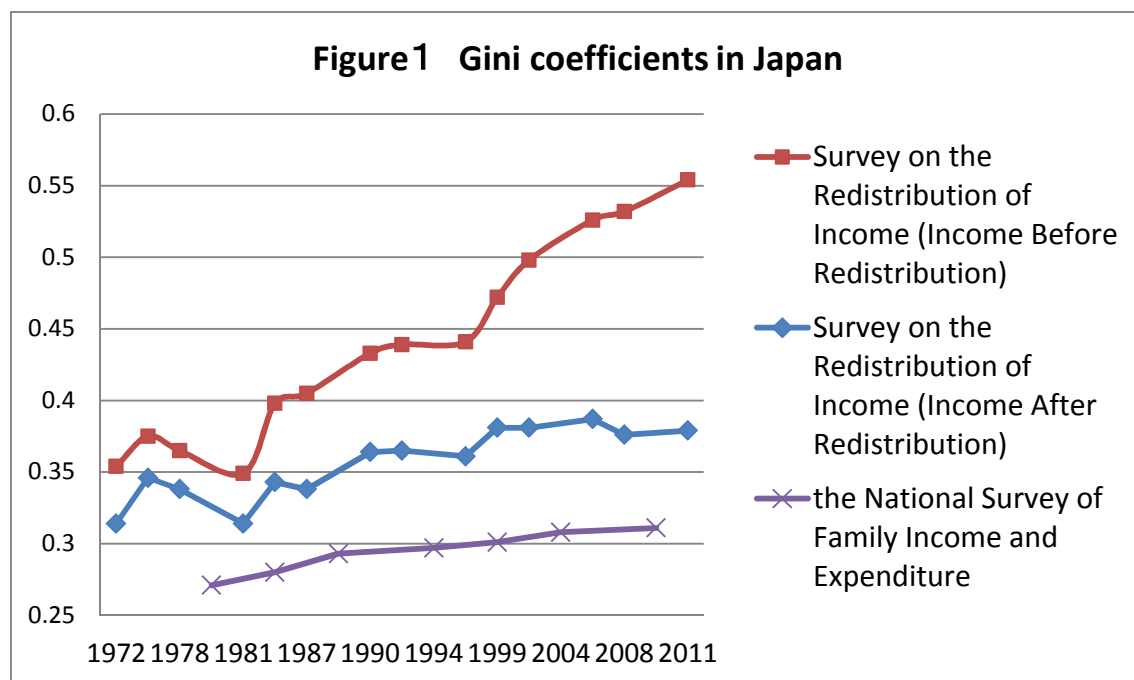
1. Introduction

On the relationship between income distribution and economic growth, there have been many theoretical and empirical researches. About the theoretical researches, income equality increases economic growth through the following three channels, according to Weil (2013) and Halter et.al. (2014). First, income equality increases economic growth by fiscal policy and less redistribution because less redistribution or lower tax increases the efficiency of the economy (Perotti 1993, Alesina and Rodrick 1994, Persson and Tabellini). Secondly, equality and capital market imperfection increases human capital accumulation, because households who are not liquidity-constrained increase their spending on educations (Galor and Zeira 1993, Galor and Moav 2004). Thirdly, equality increases the political stability and makes it easier to make expectations on future economic policies (Benabou 1996).

On the other hand, equality can affect growth negatively by decreasing savings and the accumulation of physical capital, because people with higher income have higher savings rate. (Weil 2013, Kuznets 1955, Kaldor 1955). In addition, equality may decrease the realization of high-return projects (Rosenzweig and Binswanger 1993) and decrease R&D (Foellmi and Zweimullwe 2006), which inhibits economic growth. Therefore, the effects of income distribution on growth have both signs and the overall effect is an empirical problem.

In recent Japan since 1980, statistics such as the Gini indices showed that equality decreased, and active discussion on this possibility of the increase in income equality was conducted (Otake 2005, Tachibanaki 2004, 2006, Oshio, Tajika and Fukawa 2006). It is indicated that about half of the increase in the Gini indices was caused by the population aging and the increase of households with only one or two persons, but decrease of consumption equality within the same generations was also observed, and it indicates income equality decreased to some extent (Ohtake 2005). Also, the increase of inequality people felt became social problem for several years, and recent increase of the maximum rate for income taxes and the increase of inheritance taxes can be considered as the increase of government's income redistribution. After 2000, however, the constant equality decline is

not observed (Oshio 2010). Such increase or decrease in income equality can affect economic growth, and that effect is estimated in this research



with Japanese regional data for the first time.

In addition, Piketty (2014) lately analyzed long-run data for more than two hundred years and showed that wealth and income distribution tend to diverge because wealth accumulated in the past grows more rapidly than output and wages. Piketty argues that such inequality in wealth at the top income level is of no use in promoting growth, and this conclusion is consistent with the result in this research.

In figure 1, the transition of the Gini index from two major surveys in Japan are shown. The red line shows the Gini index on the income before redistribution in the Survey on the redistribution of income, and it has been increasing sharply. However, the Gini index on the income after redistribution in the same Survey shown by the blue line increased more slowly during 1980-2002 and did not show constant increase after 2003. Also, if we look at the violet line which shows the Gini index of the pretax income in the National Survey of family income and expenditure, it is lower but increasing since 1979.

In the existing empirical researches, the estimated effects of income distribution on economic growth are different, depending on data and the

estimation methods. Lately, Deininger and Square's (1996) panel cross-country dataset and regional panel data within one country are widely used in the empirical researches. While most cross-country studies found a positive relationship between income equality and economic growth, Forbes (2000) and Li and Zou (1998) used Deininger and Square's panel data and found negative relationship between equality and growth.

Weil (2013) explains the reason why it is difficult to find out the effect of income distribution on economic growth is that the effect may depend on a country's stage of growth, as well as other factors such as whether a country is open to capital flows from abroad. Actually, Barro (2000) found that equality decreases growth within rich countries, but raises it in poorer countries.

Recently, Panizza (2002) and Partridge (1997) conducted empirical researches with U.S. states panel data, Simoes et. al. (2013) used Portuguese regional panel data, and Kurita and Kurosaki (2011) used Thai and the Philippine regional panel data. The research in Panizza (2002) found evidence in support of a positive relationship between equality and growth, using a data of the 48 states of the continental US for the 1940-1980 period.

In the research using panel data of U.S. states, Partridge (1997) found out that equality measured with the Gini index has negative and significant effect on growth, and that equality measured with the income share of the third quintile has positive and significant effect on growth. Partridge (1997) and Panizza (2002) both used the same two measures of income distribution, the Gini indices and the income share of the third quintile. This research used four measures of inequality including these same two measures on the Japanese prefectural panel data and found that equality had positive effects on growth. Partridge (1997) explains his result the median voter theory, and this theory can also be applied to some of the results from Japanese data.

In addition, Simoes et. al. (2013) and Voitchovsky (2005) analyzed the effects of different distribution measures on growth with cross-country panel data. In addition to the general Gini indices, they used income percentile data of the top income group and the bottom income group to analyze their effects on income, and found different effects from different measures of equality. Thus, in this research, I analyzed the effects of the Gini indices and the income share of the third quintile at first, then, I investigated the

effects of the income share of the top 10% income group and the bottom 10% income group.

Using a regional panel data within one country has an advantage that the county's stage of growth, other factors such as whether a country is open to capital flows from abroad, and the measurement method of equality are the same in the data. Therefore, in this paper, prefectural panel data from Japan is used, following the recent empirical researches. Since such research using Japanese panel data has been conducted for the first time, it is important to find out what kind of effects this data shows.

This paper is organized as follows. Section 2 illustrates data set; Section 3 presents the results of estimation; Section 4 concludes.

2. Data

In this paper, Japanese prefectural panel data is used. The summary statistics is shown in table 1, and the correlation matrix is shown in table 2.

Data is a panel for 47 prefectures for the 1980 (1979 for the distribution variables) – 2010 (2009), every 5 years for 6 periods. `growth5` is the five-year average annual growth rate from the base year. `LogIncome` is the natural log of the average per capita income in prefectures. These data are

Table1 Summary Statistics

	No.of obs.	Average	S.E.	Minimum	Maximum
<code>growth5</code>	282	0.0117	0.0245	-0.0375	0.0654
<code>growth10</code>	141	0.0145	0.0253	-0.0200	0.0627
<code>LogIncome</code>	329	3.3730	0.1110	3.0790	3.6646
<code>Gini</code>	282	0.2523	0.0850	0.0590	0.3800
<code>Q3</code>	282	0.1769	0.0045	0.1565	0.1892
<code>90/50</code>	282	2.7151	0.2499	2.1666	4.0816
<code>10/50</code>	282	0.4024	0.0344	0.3067	0.5091
<code>HighSchool</code>	282	41.1663	5.8431	25.0151	56.8238
<code>College</code>	282	20.1745	8.2518	7.3391	47.6881
<code>Agriculture</code>	282	10.2585	6.0017	0.4000	26.6000
<code>Urban</code>	282	48.5993	18.5704	23.4000	98.0000
<code>Old</code>	282	16.7283	4.6685	6.1636	27.1352
<code>Manufacturing</code>	282	20.8058	6.5005	4.9178	34.6487
<code>FinanInsRealEst</code>	282	3.3291	0.9038	2.0771	7.0241

Government	282	3.7017	0.8064	2.2581	6.7096
------------	-----	--------	--------	--------	--------

Table2. Correlation Matrix													
	LogIncome	growth5	growth10	Gini	Q3	10/50	90/50	HighSchool	College	Agriculture	Urban	Old	Manufacturing
	1												
	-0.759	1.000											
	-0.879	0.948	1.000										
	0.707	-0.601	-0.944	1.000									
	-0.254	0.332	0.258	-0.378	1.000								
	-0.237	0.474	0.555	-0.525	0.230	1.000							
	0.308	-0.422	-0.391	0.470	-0.940	-0.427	1.000						
	0.379	-0.384	-0.742	0.337	0.089	-0.157	-0.039	1.000					
	0.780	-0.738	-0.728	0.512	-0.401	-0.312	0.426	0.224	1.000				
	-0.741	0.476	0.510	-0.366	0.326	0.001	-0.300	-0.157	-0.760	1.000			
	0.382	-0.148	-0.153	0.103	-0.346	0.074	0.311	-0.094	0.537	-0.697	1.000		
	0.251	-0.382	-0.732	0.636	-0.142	-0.475	0.201	0.172	0.234	0.053	-0.348	1.000	
	0.197	0.217	0.116	-0.174	0.303	0.472	-0.353	0.064	-0.098	-0.310	-0.018	-0.288	1.000
	0.424	-0.138	-0.224	0.159	-0.286	0.093	0.246	-0.044	0.554	-0.645	0.835	-0.350	-0.015
	-0.403	0.030	0.060	0.017	-0.119	-0.250	0.124	0.022	-0.178	0.373	-0.157	0.119	-0.785
													1.000

obtained or calculated from “the Annual Report on Prefectural Accounts” released by the Cabinet Office.

Gini is the Gini index about the yearly income and Q3 is the income share of the third quintile in 47 prefectures. 90/50 is the ratio of the income share of the top income decile and the 5th income decile, and 10/50 is the ratio of the income share of the bottom income decile and the 5th income decile in prefectures.

The Gini indices data is obtained from “the National Survey of Family Income and Expenditure.” The data on the income share of the third quintile, 90/50 and 10/50 are calculated from the yearly household pretax income share by deciles in “the National Survey of Family Income and Expenditure.”¹

Table 2 shows that the correlation between the Gini index and Q3 is -0.378. The Gini index is the established measure of income inequality, and the negative correlation with the Gini index shows that Q3 is the measure of income equality.

Also, the figure 2 shows the change of the income share of the third quintile (Q3) at the horizontal axis, and the change of the income share of the first and second quintiles (Q1 + Q2) and that of the richer fourth and fifth quintiles (Q4 + Q5) at the vertical axis. This figure shows that when the income share of the middle class increases, income share of the poorer two quintiles tend to increase and the income share of the richer two quintiles tend to decrease. Therefore, we can interpret that the overall income equality tends to increase when Q3 increases.

In Figure 3, the correlation between the change of Q3 and the change of the ratio of income share of the top decile and the 5th decile (90/50), and the correlation between the change of Q3 and the change of the ratio of income share of the bottom decile and the 5th decile (10/50) are shown. Table 2 shows us that the correlation between Q3 and 90/50 is -0.940 and the correlation between Q3 and 10/50 is 0.230. Therefore, the income share of the middle quintile has strong negative correlation with the income share of the top decile, and has weak positive correlation with the income share of the

¹ The data of the Gini indices and the yearly household pretax income share by deciles in “the National Survey of Family Income and Expenditure” are data about the households who have two persons or more. The data on the number of household members in each prefecture is not available, so the household income is used in this research instead of per-capita income adjusted by the equivalence scale.

Figure 2. Change of Q3 versus Q1+2, Q4+5 during 1979-2004

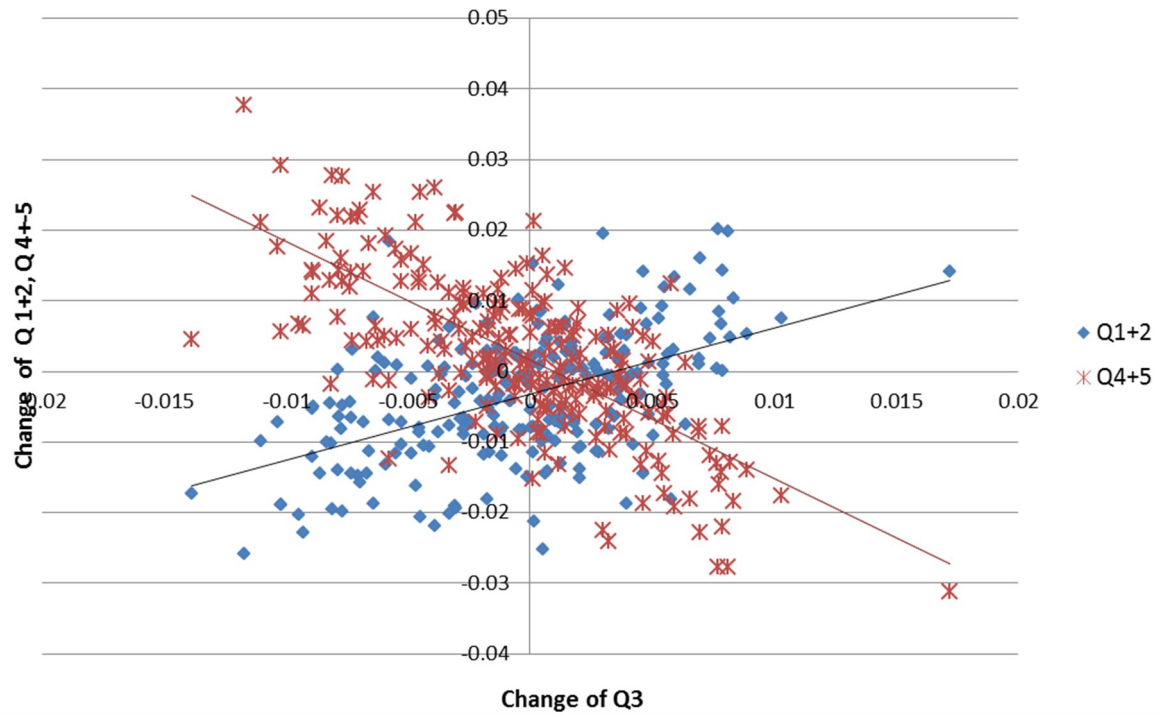
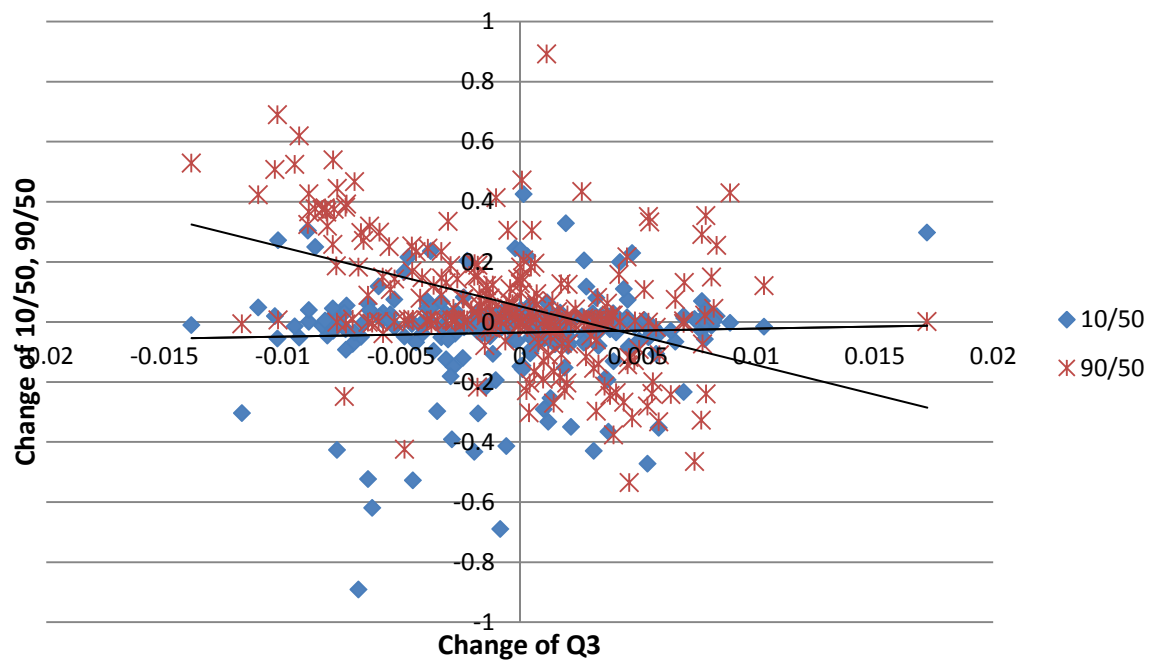


Figure3. Change of Q3 versus 10/50, 90/50 during 1979-2004



bottom decile. Figure 3 also shows that the Q3 and the 90/50 has negative correlation, and the Q3 and the 10/50 has weak positive correlation. This also indicates that the Q3 is the measure of equality.

As for the other variables, following Panizza (2002), Partridge (1997) and Perotti (1996), the first one is the average skills of the labor force (HighSchool is the percentage of the population over 15 years old that have graduated from high school, but not a college, and College is the percentage that graduated from two- or four-year college or graduate school) and they are from “the employment status survey.” The next variables are the degree of urbanization (Urban measures the fraction of the population that lives in urban areas), age structure (Old measures the percentage of the population above 65 years of age), and industrial structure (Agriculture, Manufacturing, FinanInsRealEst, Government measure the percentage of the population employed in agriculture; construction; manufacturing; finance, insurance, and real estate; and government). Agriculture and Urban are the data from the “Statistical Indicator of Social Life –Prefectural Indicator–” by the Statistics Bureau, Ministry of Internal Affairs and Communications. Old, Construction, Manufacturing, FinanInsRealEst, Government are from “the Population Census.”

3. Estimations

In this section, the estimation results are shown. The estimated model is the following:

$$Growth_{(t,t+5),i} = \beta y_{t,i} + \gamma DISTRI_{t-1,i} + \theta X_{t,i} + \alpha_i + \varepsilon_{t,i} \quad (1)$$

In this equation, $Growth_{(t,t+5)}$ is the average annual growth rate of prefectural income from year t to $t+5$, y_i is prefecture i 's natural log of income per capita, $DISTRI_{t-1,i}$ is a variable capturing income distribution (measured using the Gini index, the income share of the third quintile, 90/50, and 10/50) in year $t-1$ and X_i is the prefecture i 's matrix of controls.

As the Kuznets curve argues, the growth or income level affects income distribution, so there is an inverse causality from growth to income inequality. However, in this research, only the effect of inequality on growth is estimated as the first step. In order to clarify this causality, the variables on income distribution are used with one-year lag.

The matrix X_i includes stock of human capital (HighSchool and College), the degree of urbanization (Urban), age structure (Old) and the initial industrial mix of the prefecture (Agriculture, Manufacturing FinanInsRealEst, Government). α_i denotes the prefecture i's unobservable prefecture-specific effect, and $\varepsilon_{t,i}$ is the remainder stochastic disturbance term.

The independent variables of equation (1) contain the lagged dependent variable (prefectural income) and this dynamic panel data structure may make the fixed effects estimators biased² (Panizza 2002; Caselli *et al.* 1996; Judson and Owen 1999). Also, we have data of 6 periods for 5 years each, and this small number of samples makes the system GMM estimation developed by Arellano and Bover (1995) and Blundell and Bond (1998) more desirable than the first-difference GMM developed by Arellano and Bond(1991). Therefore, in this research, the system GMM estimation is conducted as in the many recent literatures (Voitchovsky 2005, Kurita and Kurosaki 2011, Castello-Climent, A., 2010 etc.)

The system GMM estimation results with Q3 and the Gini indices are shown in table3. In table 3, the estimation results without the control variables are shown in the first two columns, and the results with the control variables are in the next two columns, and the results with the control variables and the period dummies are shown in the last two columns. In all estimation results, the changes of Q3 have positive effects on changes of growth when they are statistically significant, and changes in the Gini indices have negative effects on changes in growth when they are statistically significant.

Therefore, both of the income of the third quintile and the Gini indices indicate that income equality increases the economic growth. The difference between the two measures is that the Gini indices measure the overall income distribution, although the income share of the third quintile measures the income or well-being of the middle class of the economy. In addition, we should note that in these estimations the population aging is controlled by the variable Old (the share of the residents who are older than

² The OLS, the random effects and the fixed effects estimations are also made, and the F-tests and Hausman tests results show that the fixed effects estimation is the desirable among these three estimation methods. However, the fixed effects estimation results are biased and are not reported in this paper.

65 years), and Old does not have statistically significant effects on growth³.

As for Q3, Partridge (1997) used the U.S. state panel data and obtained the same positive effects. Partridge explained this result with a positive relationship between the median voter's relative well-being and economic growth as suggested by the Persson and Tabellini (1994) and Alesina and Rodrik (1994).

The Q3 results from Japanese data can also be explained with the median voter theory. According to the median voter theory, the decision over the tax rate is reached under simple majority rule in voting. Then, the tax rate or the policy chosen will be the one preferred by the person with the median level of pretax income, who is often referred to as the median voter. (Alesina and Rodrik 1994, Weil 2013)

Under this median voter theory, if the income share of the median voter who is included in the third quintile increases, s/he demands less redistribution. Then, the tax rate will be lower and there will be less inefficiency caused by tax and redistribution, which leads to higher economic growth rate.

Although Japanese prefectural governments are more centralized than U.S. state governments, Doi (1999) empirically showed that the median voter theory also applies to Japanese prefectural governments. In Japan, prefecture revenues are almost entirely controlled by the central government, with the rates and sources of Local Taxes being basically determined by national laws such that prefectural governments have limited discretion over them. However, governors petition the central government as the agents of the median voters and that the central government accordingly distributes inter-regional grants to each prefectural government in a manner reflecting prefectural election results, i.e., the jurisdictional preference of the median voter. The probability of reelection for an incumbent governor increased as the difference between the actual level of expenditure and the estimated level desired by the median voter decreased ; a finding which supports the interpretation of the median voter hypothesis in Japanese prefectures.

As for the Gini indices, the negative effects on growth can be caused by the lower investment in human capital such as education, more

³ Ohtake and Sano (2009) used prefectural panel data and median voter theory and found out that population aging has negative effects on public spending on education. Therefore, the higher share of old people can affect education (College) negatively and results in lower economic growth.

redistribution and more inefficiency, and political instability in Japan. About the political instability, Japan had five short-lived cabinets, each of which lasted for less than one year since 2006. These often changed cabinets make the government policies unstable and make it harder for private agents to invest aggressively.

Table3 System GMM Estimations

	No controls			Controls			Controls and Period Dummies		
LogIncome	-0.314 (.0440)***	-0.258 (.0240)***	-0.331 (.0442)***	-0.596 (.0632)***	-0.598 (.0635)***	-0.599 (.0651)***	-0.574 (.0676)***	-0.582 (.0678)***	-0.575 (.0684)***
Q3		0.386 (.2193)*	-0.382 (.3508)		0.413 (.1900)**	0.277 (.3269)		0.387 (.1964)**	0.274 (.3316)
Gini	-0.177 (.0692)**		-0.270 (.1143)**	-0.125 (.0610)**		-0.055 (.1074)	-0.114 (.0641)*		-0.048 (.1102)
HighSchool				-0.001 (.0005)	-0.001 (.0005)	-0.001 (.0005)	-0.001 (.0007)	-0.001 (.0007)	-0.001 (.0007)
College				0.002 (.0009)**	0.002 (.0008)**	0.002 (.0009)**	0.002 (.0011)*	0.002 (.0011)*	0.002 (.0011)*
Urban				-0.001 (.0009)	-0.001 (.0008)	-0.001 (.0009)	-0.001 (.0009)	-0.001 (.0009)	-0.001 (.0009)
Old				0.000 (.0014)	0.000 (.0014)	0.000 (.0015)	0.001 (.0020)	0.001 (.0020)	0.001 (.0020)
Agriculture				0.002 (.0020)	0.001 (.0020)	0.001 (.0021)	0.002 (.0022)	0.001 (.0022)	0.002 (.0022)
Manufacturing				0.003 (.0016)*	0.003 (.0016)	0.003 (.0016)	0.002 (.0017)	0.002 (.0016)	0.002 (.0018)
FinanInsRealEst				0.021 (.0064)***	0.022 (.0060)***	0.021 (.0066)***	0.021 (.0067)***	0.022 (.0066)***	0.021 (.0068)**
Government				0.009 (.0093)	0.010 (.0093)	0.009 (.0095)	0.010 (.0098)	0.011 (.0098)	0.010 (.0100)
Constant	1.164 (.1528)***	0.739 (.1105)***	1.421 (.2023)***	1.881 (.2380)***	1.743 (.2353)***	1.809 (.2711)***	1.833 (.2480)***	1.755 (.2402)***	1.735 (.2874)***
N. obs.	188	188	188	188	188	188	188	188	188

Notes: standard errors in parentheses

* Denotes a parameter which is significant at 10%; ** at 5%, and *** at 1%.

About other independent variables, if the initial income level is higher, growth rate is lower, which means that prefectural per capita incomes tend to converge. The human capital measured by the shares of college graduates among residents has positive effects on growth, which is the expected positive effect of human capital. In addition, larger share of employment in manufacturing, finance, insurance and real estate raised the growth rates. This may mean that these industries had higher growth rates of income or productivity.

Next, I used the different income distribution measures to estimate their effects on growth. Specifically, I used the ratio of the income share of the top decile and the 5th decile (90/10) and the ratio of the income share of the bottom decile and the 5th decile (10/50) to analyze how the distribution change in the top income and the bottom income affect the growth. This is because the existing researches such as Halter, et. al. (2014), Castello-Climent (2010) and Voitchovsky (2005) have shown that the different parts of income distribution such as the income share of the top and bottom can have different effects on growth from the general distribution shown by the Gini and the income share of the middle class shown by Q3.

Table4 System GMM Estimations: No Controls

	10/50	90/50	Gini and 10/50	Gini and 90/50	10/50 and 90/50	Gini, 10/50 and 90/50
LogIncome	-0.287 (.025)***	-0.262 (.0238)***	-0.335 (.0457)***	-0.346 (.0446)***	-0.287 (.0250)***	-0.348 (.0473)***
10/50	0.031 (.0344)		0.016 (.0352)		0.027 (.0342)	-0.036 (.0447)
90/50		-0.007 (.0043)		0.014 (.0090)	-0.006 (.0043)	0.020 (.0117)*
Gini			-0.143 (.0718)**	-0.354 (.1493)**		-0.461 (.1990)**
Constant	0.912 (.0841)***	0.956 (.0893)***	1.142 (.1534)***	1.329 (.1570)***	0.971 (.0904)***	1.323 (.1683)***
N. obs.	141	141	141	141	141	141

Notes: Robust standard errors in parentheses

* Denotes a parameter which is significant at 10%; ** at 5%, and *** at 1%.

Table5. System GMM Estimations: With Controls

	Gini	10/50	90/50	Gini and 10/50	Gini and 90/50	10/50 and 90/50	Gini, 10/50 and 90/50
LogIncome	-0.596 (.0632)***	-0.586 (.0638)***	-0.605 (.0632)***	-0.596 (.0641)***	-0.606 (.0653)***	-0.605 (.0644)***	-0.607 (.0670)***
10/50		0.003 (.0321)		-0.013 (.0330)		0.005 (.0319)	0.020 (.0404)
90/50			-0.009 (.0038)**		-0.012 (.0090)	-0.009 (.0039)**	-0.016 (.01116)
Gini	-0.125 (.0610)**			-0.129 (.0641)**	0.045 (.1454)		0.114 (.1834)
HighSchool	-0.001 (.0005)	-0.001 (.0005)	-0.001 (.0005)	-0.001 (.0005)	-0.001 (.00058)	-0.001 (.00058)	-0.001 (.00060)
College	0.002 (.0009)**	0.002 (.0009)**	0.002 (.0008)**	0.002 (.0009)**	0.002 (.0009)**	0.002 (.0009)**	0.002 (.00098)
Urban	-0.001 (.0009)	-0.001 (.00092)	-0.001 (.0008)	-0.001 (.0009)	-0.001 (.00092)	-0.001 (.00091)	-0.001 (.00094)
Old	0.000 (.0014)	0.000 (.0014)	0.000 (.0014)	0.000 (.0015)	0.000 (.00157)	0.001 (.00147)	0.000 (.00166)
Agriculture	0.002 (.0020)	0.002 (.00212)	0.002 (.0020)	0.002 (.0021)	0.002 (.0021)	0.002 (.0021)	0.002 (.00212)
Manufacturing	0.003 (.0016)*	0.003 (.0016)*	0.003 (.0015)*	0.003 (.0016)*	0.003 (.0016)*	0.003 (.0016)*	0.003 (.0016)*
FinanInsRealEst	0.021 (.0064)***	0.024 (.0062)***	0.022 (.0061)***	0.021 (.0065)***	0.022 (.0066)***	0.023 (.00623)***	0.024 (.0066)***
Government	0.009 (.0093)	0.007 (.0095)	0.011 (.0093)	0.010 (.0095)	0.011 (.0095)	0.010 (.0095)	0.010 (.0096)
Constant	1.881 (.2380)***	1.798 (.2389)***	1.881 (.2355)***	1.893 (.2442)***	1.886 (.2423)***	1.877 (.2409)***	1.872 (.2459)***
N. obs.	188	188	188	188	188	188	188

Notes: standard errors in parentheses

* Denotes a parameter which is significant at 10%; ** at 5%, and *** at 1%.

Table6. System GMM Estimations: With Controls and Period Dummies

	Gini	10/50	90/50	Gini and 10/50	Gini and 90/50	10/50 and 90/50	Gini, 10/50 and 90/50
LogIncome	-0.574 (.0676)***	-0.569 (.0671)***	-0.592 (.0679)***	-0.570 (.0689)***	-0.580 (.0679)***	-0.591 (.0694)***	-0.573 (.0696)***
10/50		0.002 (.0329)		-0.013 (.0339)		0.004 (.0330)	0.027 (.0411)
90/50			-0.009 (.0039)**		-0.013 (.0092)	-0.009 (.0040)**	-0.019 (.0114)*
Gini	-0.114 (.0641)*			-0.117 (.0670)*	0.072 (.1493)		0.176 (.1890)
HighSchool	-0.001 (.0007)	-0.001 (.0007)	-0.001 (.0007)	-0.001 (.0007)	-0.001 (.0007)	-0.001 (.0007)	-0.001 (.0007)
College	0.002 (.0011)*	0.002 (.0011)	0.002 (.0011)*	0.002 (.0011)*	0.002 (.0011)*	0.002 (.0011)*	0.002 (.0012)*
Urban	-0.001 (.0009)	-0.001 (.0009)	-0.001 (.0009)	-0.001 (.0009)	-0.001 (.0009)	-0.001 (.0009)	-0.001 (.00096)
Old	0.001 (.0020)	0.001 (.0020)	0.001 (.0020)	0.001 (.0020)	0.001 (.0020)	0.001 (.0020)	0.001 (.0021)
Agriculture	0.002 (.0022)	0.001 (.0022)	0.001 (.0022)	0.002 (.0022)	0.002 (.0022)	0.001 (.0022)	0.002 (.0022)
Manufacturing	0.002 (.0017)	0.003 (.0017)	0.003 (.0016)	0.002 (.0018)	0.002 (.0017)	0.003 (.0017)	0.002 (.0018)
FinanInsRealEst	0.021 (.0067)***	0.023 (.0067)***	0.022 (.0066)***	0.022 (.0068)***	0.022 (.0068)***	0.023 (.0066)***	0.023 (.0068)***
Government	0.010 (.00983)	0.008 (.0101)	0.012 (.0098)	0.011 (.0102)	0.010 (.0100)	0.012 (.0102)	0.011 (.0102)
Constant	1.833 (.2480)***	1.783 (.2443)***	1.867 (.2456)***	1.834 (.2546)***	1.836 (.2469)***	1.860 (.2505)***	1.780 (.2505)***
N. obs.	188	188	188	188	188	188	188

Notes: standard errors in parentheses

* Denotes a parameter which is significant at 10%; ** at 5%, and *** at 1%.

The system GMM estimation results are in table 4 to 6. Table 4 shows the estimation results without the control variables, table 5 shows the results with the control variables, and the table 6 shows the results with the control variables and the period dummies. In all tables, we find that the income share of the bottom decile does not have statistically significant effects, although the income share of the top decile mainly has negative effects on growth when they are statistically significant. The Gini indices have negative effects on growth when they are significant, as in the previous estimations. Therefore, in these estimations, we find that the equality at the top income and the overall income raises economic growth. This result has the opposite sign from the existing literature which uses the cross-country panel data (Castello-Climent 2010, Voitchovsky 2005).

One of the explanations of this positive effect could be that under low growth rate and low rate of wage increase, increase in the income share of top 10% makes people feel less inequality than the actual level, which may lead to demand for more redistribution. The second possibility is that richest 10% people have more political power than others and they may be less willing to pay for the government expenditure on public educations, because they tend to use more private schools.

Finally, the results of the first-difference GMM are shown in table 7 to 9 in order to see the sensitivity to changes in the estimation methods and instrument set. In these two tables, the estimated coefficients on the four distribution variables such as the Gini indices, Q3, 90/50, 10/50 have the same sign as the results in the system GMM estimation. Although the coefficients estimates on some control variables are different, the main results about the effects of inequality on growth are unchanged, and it suggests the estimate results in this research are robust.

Although the estimation results in this research show that income equality increased economic growth in Japan, how income equality affected growth need to be investigated further. For example, the effects of equality through public spending on education or college enrolment rates are planned to be estimated as the next step.

4. Conclusion

In this paper, the prefectural panel data of Japan from 1979 to 2010 is used to investigate how income equality affects economic growth. In the

system GMM estimations, income equality affects five-year growth positively and statistically significantly, if equality is measured with the Gini indices and the income share of the third quintile.

The estimation results with Q3 can be explained with the median voter theory, because if the income share of the third quintile increases, the income of the median voter also increases and less redistribution will be chosen, which increase efficiency and enhances growth. The negative effects of the Gini indices can be explained with less investment in human capital, more redistribution and less efficiency, and political instability. As for the estimations with the income share of the top decile, we find that equality increases growth, and the income share of the bottom decile does not affect growth rate. This result with Japanese prefectural data is consistent with the findings by Piketty (2014). The effect of equality through education is planned to be estimated in future research,

Table7. Sensitivity analysis: First-difference GMM Estimations

	No controls			Controls			Controls and Period dummies		
LogIncome	-0.343 (.0085)***	-0.421 (.0191)***	-0.440 (.0210)***	-0.515 (.038)***	-0.552 (.041)***	-0.584 (.048)***	-0.740 (.050)***	-0.739 (.047)***	-0.741 (.048)***
Q3	0.497 (.2145)**		0.556 (.2621)**	0.208 (.151)		0.396 (.2284)*	0.297 (.1592)*		0.158 (.2227)
Gini		-0.154 (.0562)***	-0.031 (.0759)		-0.013 (.0388)	0.067 (.0606)		-0.094 (.0471)**	-0.057 (.06631)
HighSchool				0.000 (.0003)	0.000 (.0003)	-0.001 (.0002)*	-0.0013 (.00061)**	-0.0011 (.00061)*	-0.0011 (.00059)*
College				0.000 (.0004)	0.001 (.0004)	0.001 (.0004)	-0.001 (.0006)	-0.001 (.0006)	-0.001 (.0006)
Urban				0.000 (.0006)	0.000 (.0005)	0.000 (.0005)	0.000 (.0005)	0.000 (.0005)	0.000 (.0005)
Old				-0.005 (.001)***	-0.004 (.001)***	-0.003 (.001)**	-0.003 (.001)**	-0.003 (.001)**	-0.003 (.001)**
Agriculture				-0.001 (.0013)	0.000 (.0014)	-0.001 (.0013)	0.001 (.0011)	0.001 (.0011)	0.001 (.0011)
Manufacturing				0.000 (.0010)	0.001 (.0009)	0.001 (.0009)	0.002 (.0009)**	0.002 (.0009)**	0.002 (.0009)*
FinanInsRealEst				0.002 (.0060)	0.002 (.0059)	0.002 (.0058)	0.007 (.0053)	0.006 (.0051)	0.006 (.0054)
Government				0.002 (.0073)	0.004 (.0068)	0.006 (.0067)	0.007 (.0058)	0.007 (.0059)	0.007 (.005)
Constant				1.730 (.173)***	1.856 (.165)***	1.776 (.178)***	2.476 (.227)***	2.560 (.221)***	2.550 (.241)***
<i>p</i> -value ¹			0.006***			0.214			
N. obs.	188	188	188	188	188	188	188	188	188

Notes: Robust standard errors in parentheses

* Denotes a parameter which is significant at 10%;, ** at 5%, and *** at 1%.

¹ Wald joint test on the inequality variable coefficients in the regression

Table8. Sensitivity analysis: First-difference GMM Estimations with Controls

	Gini	10/50	90/50	Gini and 90/50	Gini and 10/50	10/50 and 90/50	Gini, 10/50 and 90/50
LogIncome	-0.618 (.0631)***	-0.601 (.0633)***	-0.618 (.062)***	-0.629 (.0654)***	-0.616 (.064)***	-0.616 (.064)***	-0.628 (.066)***
10/50		-0.008 (.0311)			-0.021 (.0319)	-0.003 (.0311)	0.004 (.0401)
90/50			-0.009 (.0039)**	-0.010 (.0088)		-0.009 (.004)**	-0.011 (.0112)
Gini	-0.130 (.0637)**			0.004 (.1440)	-0.135 (.066)**		0.032 (.18627)
HighSchool	0.000 (.0006)	-0.001 (.0007)	0.000 (.0006)	-0.001 (.0006)	-0.001 (.0007)	-0.001 (.0007)	-0.001 (.0007)
College	0.001 (.0009)	0.001 (.0009)	0.002 (.0009)*	0.001 (.0009)	0.001 (.0009)	0.002 (.0009)*	0.001 (.0009)
Urban	-0.001 (.0009)	-0.001 (.0009)	-0.001 (.0008)	-0.001 (.0009)	-0.001 (.0009)	-0.001 (.0009)	-0.001 (.0009)
Old	0.000 (.0014)	0.000 (.0014)	0.000 (.0014)	0.000 (.0015)	0.000 (.0015)	0.000 (.0014)	0.000 (.0016)
Agriculture	0.003 (.0021)	0.002 (.0021)	0.003 (.0020)	0.003 (.0021)	0.003 (.0021)	0.003 (.0021)	0.003 (.0021)
Manufacturing	0.003 (.0015)*	0.003 (.0016)*	0.003 (.0015)*	0.003 (.0015)	0.003 (.0016)	0.003 (.0016)*	0.003 (.0016)*
FinanInsRealEst	0.011 (.0082)	0.011 (.0082)	0.013 (.0082)	0.013 (.0083)	0.012 (.0083)	0.013 (.0082)	0.013 (.0083)
Government	0.015 (.0091)	0.015 (.0094)	0.016 (.0091)*	0.015 (.0092)*	0.016 (.0093)*	0.017 (.0093)*	0.016 (.0094)*
Constant	2.015 (.254)***	1.994 (.2593)***	1.977 (.2503)***	2.033 (.2580)***	2.025 (.260)***	1.968 (.256)***	2.031 (.2619)***
<i>p</i> -value ¹				0.054*	0.128	0.082*	0.144
N. obs.	141	141	141	141	141	141	141

Notes: Robust standard errors in parentheses

* Denotes a parameter which is significant at 10%;, ** at 5%, and *** at 1%.

¹ Wald joint test on the inequality variable coefficients in the regression

Table9. First-difference GMM Estimations With Controls and Period Dummies

	Gini	10/50	90/50	Gini and 90/50	Gini and 10/50	10/50 and 90/50	Gini, 10/50 and 90/50
LogIncome	-0.739 (.0479)***	-0.732 (.0496)***	-0.738 (.0497)***	-0.740 (.0484)***	-0.741 (.0491)***	-0.737 (.0499)***	-0.742 (.0493)***
10/50		0.002 (.0262)			-0.010 (.0260)	0.003 (.0254)	-0.007 (.0353)
90/50			-0.005 (.0029)*	-0.001 (.0061)		-0.005 (.0029)*	0.000 (.0082)
Gini	-0.095 (.0471)**			-0.082 (.0993)	-0.100 (.0496)**		-0.096 (.1406)
HighSchool	-0.0011 (.00061)*	-0.0013 (.00061)**	-0.0012 (.00062)**	-0.0011 (.00061)*	-0.0011 (.0006)*	-0.0012 (.0006)**	-0.0011 (.00059)*
College	-0.001 (.0006)	-0.001 (.0006)	-0.001 (.0006)	-0.001 (.00065)	0.000 (.0005)	-0.001 (.0006)	-0.001 (.00065)
Urban	0.000 (.0005)	0.000 (.0005)	0.000 (.00058)	0.000 (.0005)	0.000 (.0005)	0.000 (.0005)	0.000 (.0005)
Old	-0.003 (.0014)**	-0.004 (.0015)**	-0.003 (.0015)**	-0.004 (.0015)**	-0.003 (.0015)**	-0.003 (.0015)**	-0.003 (.0015)**
Agriculture	0.001 (.0011)	0.001 (.0012)	0.001 (.0011)	0.001 (.0011)	0.001 (.0011)	0.001 (.0011)	0.001 (.00115)
Manufacturing	0.002 (.0009)**	0.002 (.0009)**	0.002 (.0009)**	0.002 (.0010)*	0.002 (.00096)**	0.002 (.00093)**	0.002 (.00099)*
FinanInsRealEst	0.006 (.0051)	0.006 (.0054)	0.007 (.0053)	0.006 (.0054)	0.007 (.0051)	0.007 (.0053)	0.006 (.00529)
Government	0.007 (.0059)	0.005 (.0054)	0.007 (.0059)	0.007 (.0059)	0.007 (.0058)	0.007 (.0059)	0.007 (.0058)
Constant	2.560 (.2213)***	2.534 (.2214)***	2.541 (.2235)***	2.571 (.2217)***	2.573 (.2229)***	2.535 (.2245)***	2.587 (.2241)***
N. obs.	188	188	188	188	188	188	188

Notes: Robust standard errors in parentheses

* Denotes a parameter which is significant at 10%; ** at 5%, and *** at 1%.

References

- Alesina, Alberto, and Rodrik, Dani, 1994, "Distributive Politics and Economic Growth," *Quarterly Journal of Economics* 109(2), 465-490.
- Arellano, M., and S. Bond, 1991, "Some Tests of Specification for Panel Data: Monte Carlo Evidence and Application to Employment Equations," *Review of Economic Studies* 58, 277-297.
- Arellano, M., and O. Bover, 1995, "Another look at the instrumental-variable estimation of error-components models," *Journal of Econometrics* 68, 29-52.
- Barro, Robert J., 2000, "Inequality and Growth in a Panel of Countries," *Journal of Economic Growth* 5, 5-32.
- Blundell, R., and S. Bond, 1998, "Initial conditions and moment restrictions in dynamic panel data models," *Journal of Econometrics* 87, 115-143.
- Caselli, F., G. Esquivel, and F. Lefort, 1996, "Reopening the Convergence Debate: A New Look at Cross-country Empirics," *Journal of Economic Growth* 1, 363-389.
- Castello-Climent, Amparo, 2010, "Inequality and growth in advanced economies: an empirical investigation," *Journal of Economic Inequality* 8, 293-321.
- Deininger, K., and L. Squire, 1996, "A New Data Set Measuring Income Inequality," *World Bank Economic Review* 10, 565-591.
- Doi, Takero, 1999, "Empirics of the median voter hypothesis in Japan," *Empirical Economics* 24, 667-691.
- Forbes, Kristin, 2000, "A Reassessment of the Relationship Between Inequality and growth," *American Economic Review* 90(4), 869-887.
- Halter, Daniel, M. Oechslin, and J. Zweimuller, 2014, "Inequality and

growth: the neglected time dimension,” *Journal of Economic Growth* 19, 81-104.

Judson, R., and A. Owen, 1999, “Estimating Dynamic Panel Data Models: A Guide for Macroeconomists,” *Economics Letters* 65, 9-15.

Kurita, Kyosuke, and Takashi Kurosaki, 2007, “The Dynamics of Growth, Poverty, and Inequality: A Panel Analysis of Regional Data from the Philippines and Thailand,” *Hitotsubashi University Research Unit for Statistical Analysis in Social Sciences Discussion Paper Series* 223.

Kurita, Kyosuke, and Takashi Kurosaki, 2011, “Dynamics of Growth, Poverty, and Inequality: A Panel Analysis of Regional Data from Thailand and the Philippines,” *Asian Economic Journal* 25(1), 3-33.

Li, Hongyi, and Heng-fu Zou, 1998, “Income Inequality is not Harmful for Growth: Theory and Evidence,” *Review of Development Economics*, 2(3), 318-334.

Ohtake, Fumio, 2005, *Inequality in Japan*, Nihon Keizai Shimbun, Inc.

Ohtake, Fumio, and Shinpei Sano, 2009, “Population aging and spending on compulsory education,” *Osaka University Economics* 59(3), 106-130.

Oshio, Takashi, 2010, *Welfare Analysis of Redistribution: Equity and Efficiency*, Japan Hyoronsha

Oshio, Takashi, Eiji Tajika, Tetuo Fukawa, 2006, *Income Distribution in Japan : Evidence and Policies for Tackling Widening Inequality*, University of Tokyo Press.

Panizza, Ugo, 2002, “Income Inequality and Economic Growth: Evidence from American Data,” *Journal of Economic Growth* 7, 25-41.

Partridge, Mark D., 1997, “Is Inequality Harmful for Growth? Comment,” *American Economic Review* 87(5), 1019-1032.

Perotti, Roberto, 1996, “Growth, Income Distribution, and Democracy: What the Data Say,” *Journal of Economic Growth* 1, 149-187.

Persson, Torsten, and Guido Tabellini, 1994, “Is Inequality Harmful for Growth?” *American Economic Review* 84(3): 600-621.

Piketty, Thomas, 2014, *Capital in the Twenty-First Century*, The Belknap Press of Harvard University Press.

Simoës, Marta C. N., João A. S. Andrade, and Adelaide P. S. Duarte, 2013, “A regional perspective on inequality and growth in Portugal using panel cointegration analysis,” *International Economic Policy* 10, 427-451.

Tachibanaki, Toshiaki, 2004, *Sealed Inequality*, Toyo-Keizai-shinposha.

Tachibanaki, Toshiaki, 2006, *Unequal Society – what the problems are–*, Iwanami-shoten

Weil, David N., 2013, “*Economic Growth, International Edition*,” Pearson Education, Inc.